

LEVEL B1

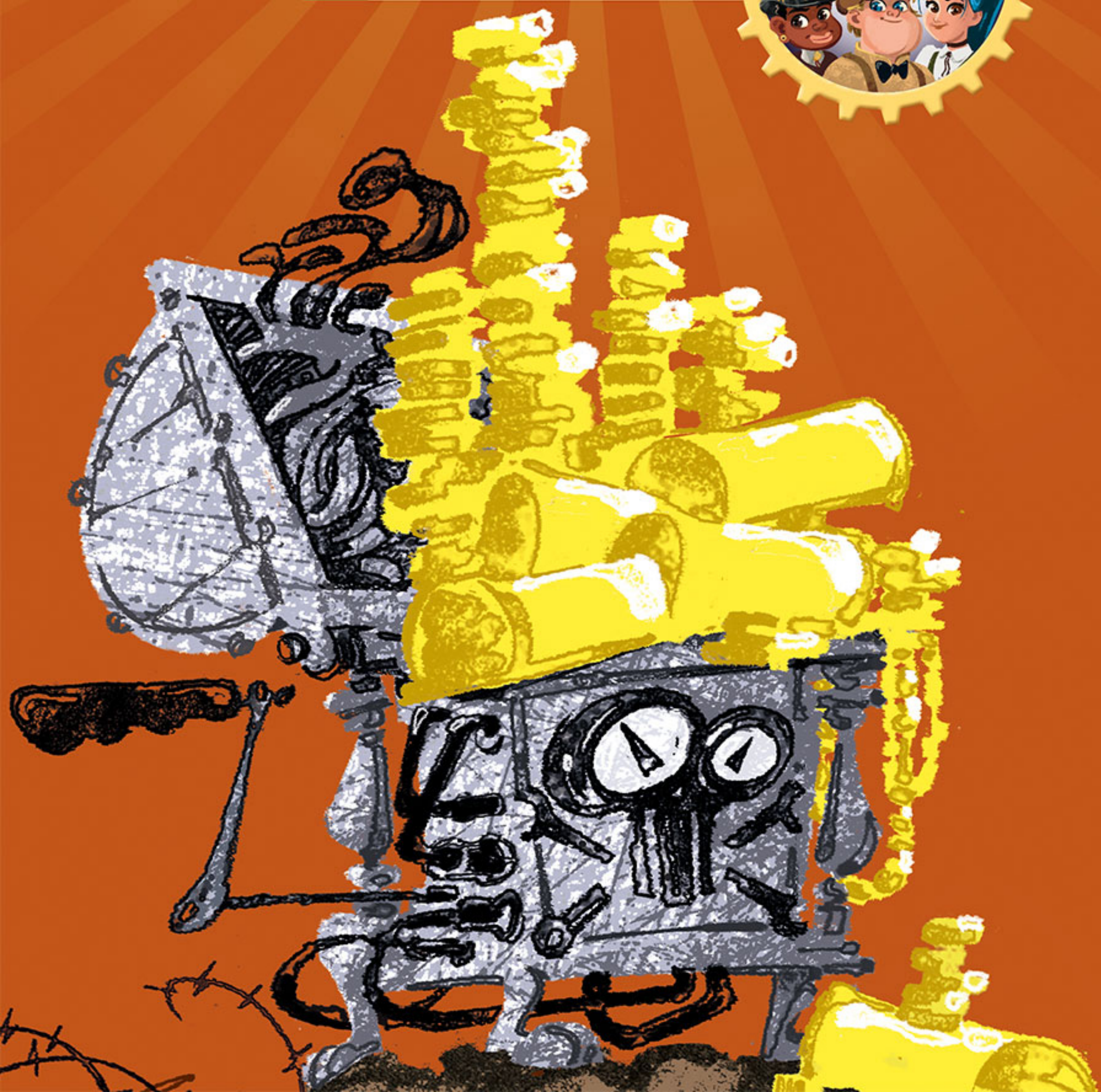
ENGLISH READERS EDELVIVES



AVANTE SCHOOL OF DETECTIVES

# The Ghostly Happenings at Farrell Mansion

David Fernández Sifres  
ILLUSTRATIONS Albertoyos



AVANTE SCHOOL OF DETECTIVES

# The Ghostly Happenings at Farrell Mansion

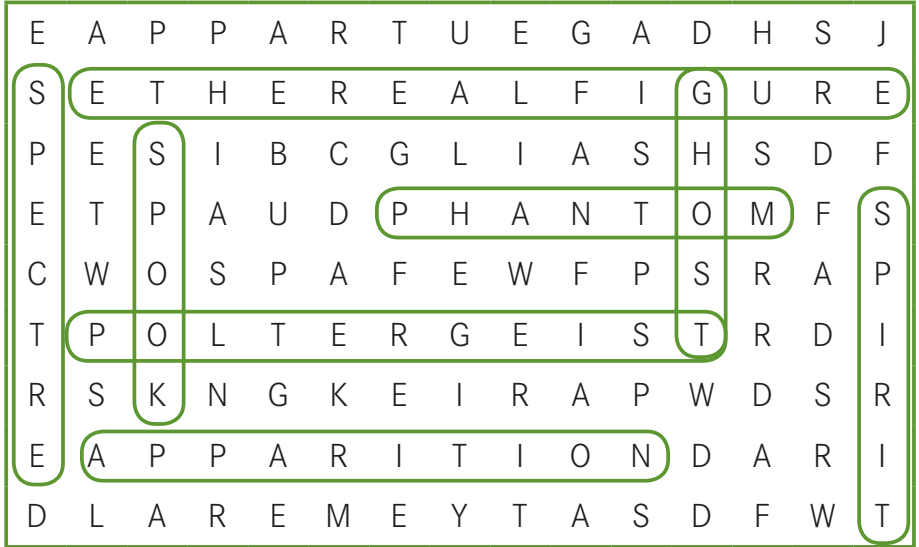
David Fernández Sifres

Illustrations  
Albertoyos

# before reading

1 Look for these 8 ghostly words in the word-search.

apparition    ethereal figure    ghost    phantom  
poltergeist    spectre    spirit    spook



2 **Decide** if these facts about mansions are True (T) or False (F).

Mansions are always more than 100 years old.

F

Mansions usually have big gardens.

T

Queens and kings always live in mansions.

F

Mansions normally have lots of bedrooms.

T

Often, a lot of people work in mansions.

T

Some mansions might have ghosts.

T

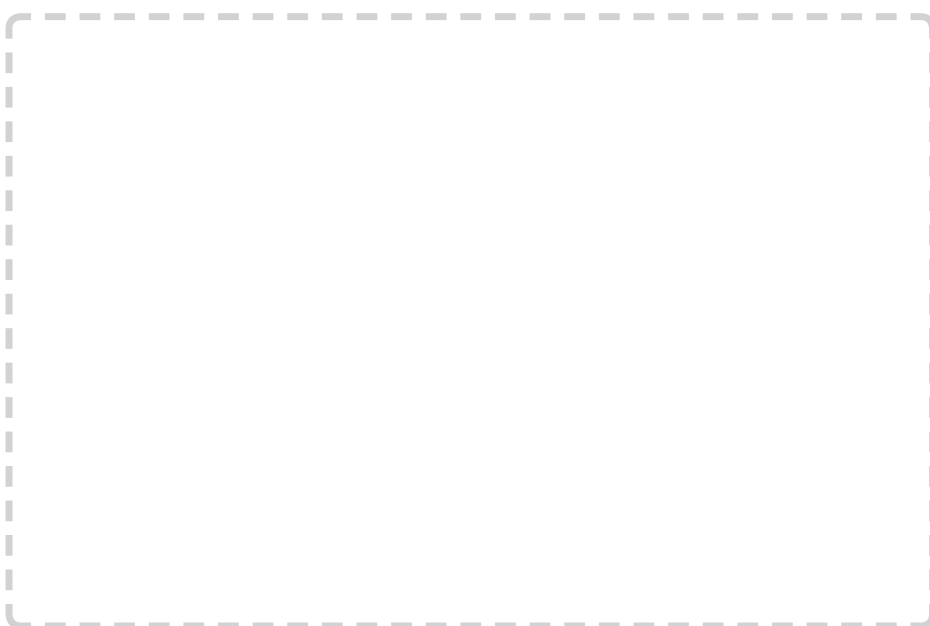
3 **Categorise** these places to live in order of size, from the smallest to the biggest. Pick one of these places and **draw** it.

mansion    semi-detached    hut    bungalow

flat    townhouse    cottage    cabin

Respuesta sugerida: hut, cabin, cottage, bungalow, flat, semi-detached, townhouse

mansion.



**4** **Categorise** these words which appear in the story - do you know them, do you think you have seen them but you're not sure, or are they new?

Coffin    Dust    Grave    Hug    Lever    Scar  
 Scaredy-cat    Spade    Trust    Well    Wink

Words I know the meaning of	Maybe I know these words	Words I don't know the meaning of
Respuesta libre.		

**5** **Investigate** what the connection is between these six things. This might be a useful clue to help solve a mystery!

a compass                      a credit card  
 a fridge door                 earphones  
 a wrecking ball                scanners for hospitals

They all use magnets.

---



---



---



6 **Look** at the title of the book: *The Ghostly Happenings at Farrell Mansion*.

Do you think the story is going to be funny? Why? \_\_\_\_\_

\_\_\_\_\_  
\_\_\_\_\_  
\_\_\_\_\_  
**Respuestas libres.**

Do you think the story is going to be sad? Why? \_\_\_\_\_

\_\_\_\_\_  
\_\_\_\_\_  
\_\_\_\_\_

Do you think the story is going to be frightening? Why? \_\_\_\_\_

\_\_\_\_\_  
\_\_\_\_\_  
\_\_\_\_\_

Do you think the story is going to be true? Why? \_\_\_\_\_

\_\_\_\_\_  
\_\_\_\_\_  
\_\_\_\_\_

7 Do you believe in ghosts? **Explain** why or why not.

\_\_\_\_\_  
\_\_\_\_\_  
\_\_\_\_\_  
\_\_\_\_\_  
\_\_\_\_\_  
\_\_\_\_\_  
\_\_\_\_\_

# during reading

**1 Compare** the members of Nautilus.

Who is the oldest? Axel

Who is the youngest? Ciro

Who is the fastest? Helena

Who is the best writer? Oto

Who is the best artist? Ciro

Who is the best at planning? Zinca

Who is the cleverest? Respuesta libre

**2 Locate** these elements from Chapters 1 and 2.

**Zinca's bedroom**    **17th century fortification**

**Underground kitchen**    **Secret passage**

There was an oil lamp in the secret passage.

\_\_\_\_\_

There were tins of tomatoes in the underground kitchen.

\_\_\_\_\_

There were coloured floor-cushions in Zinca's bedroom.

\_\_\_\_\_

The school was in a 17th century fortification.

\_\_\_\_\_

There were mountains of food in the underground kitchen.

\_\_\_\_\_

There was a gramophone in Zinca's bedroom.

\_\_\_\_\_

Their teacher was in the secret passage.

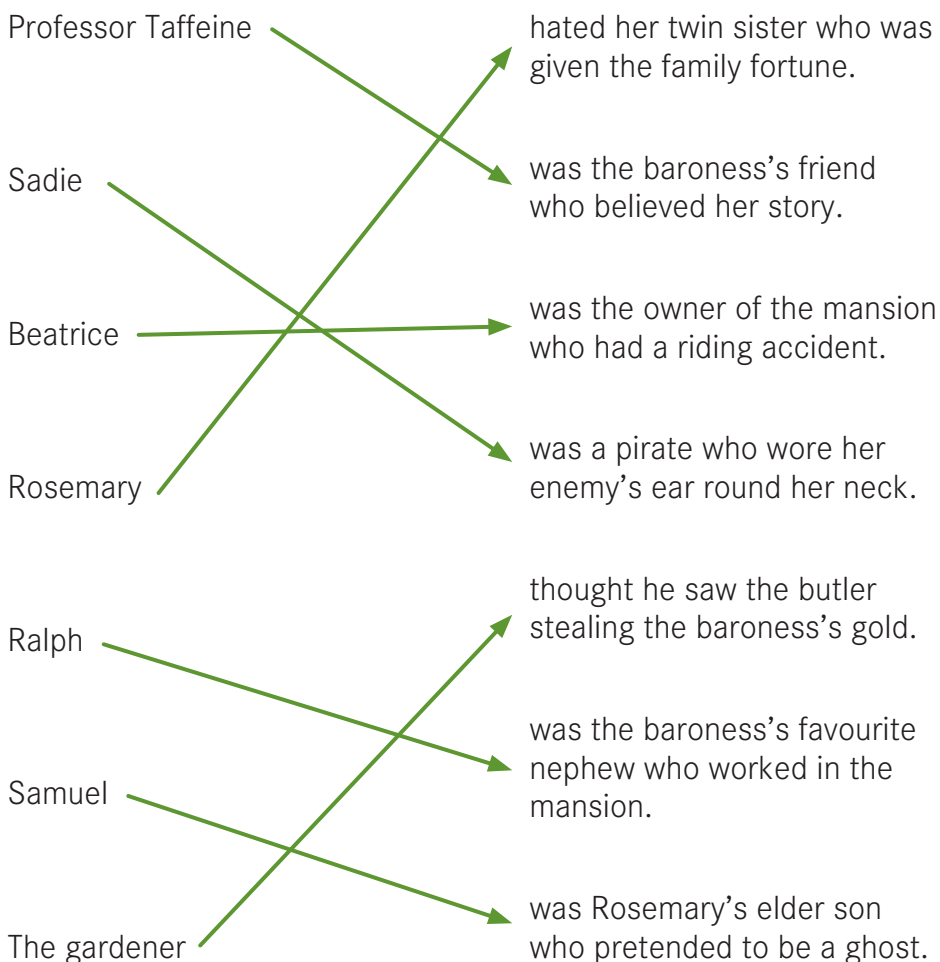
\_\_\_\_\_

3 **Add** in the missing propositions.

in inside over under behind on top

The dirigible flew over over the towns and fields. On top was a balloon that looked like a melon and inside this was helium, a gas that is lighter than air. Under the balloon was the gondola, and the passengers, the pilot and the crew sat in this part. Behind the gondola were the propellers and the engine.

4 **Match** who was who in the story.





# during reading

**5** **Unjumble** the baroness's problems.

was too frightened / The lady told / to stay in her house. / Nautilus that she

The lady told Nautilus that she was too frightened to stay in her house.

She told the children / who had worked for her / that her nephew, / had robbed her. / for fifteen years,

She told the children that her nephew, who had worked for her for fifteen years, had robbed her.

when she was a child, / that she could remember / but not things / She told them / she had done recently.

She told them that she could remember when she was a child, but not things she had done recently.

where / she didn't remember / The old lady said / her inheritance. / she had hidden

The old lady said she didn't remember where she had hidden her inheritance.

she thought / her mother / wanted to take / the ghost / She said / had left her. / the gold and jewels

She said she thought the ghost wanted to take the gold and jewels her mother had left her.

**6** **Locate** each of these elements in the correct place - the mansion, the tower or the hut.

The ghost was in the mansion.

The fireplace and firewood were in the hut.

The baroness's clothes were in the tower.

The tower was locked.

The hut was warm and dry.

The mansion was enormous, dark and frightening.

7 **Put** the adjectives with the correct things in the mansion.

creaky	→	organ keys
stone	→	case
round	→	corridors
golden	→	front door and stairs
dusty	→	paintings
glass	→	tablecloth
wide	→	house
missing	→	dining table

8 Helena's 5 senses are very highly developed. **List** the things that Nautilus sensed in Chapter 8.

They saw dark clouds.

They heard thunder.

They tasted sandwiches.

They smelled petrichor and geosmin.

They felt rain.



# during reading

- 9 The mansion was filled with mysteries. **Describe** what Nautilus thought was mysterious about these places.

The deserted house was mysterious because the organ played music.

The kitchen was mysterious because there was no food and no fuel.

The kitchen cupboards were mysterious because they were hidden.

The dining room was mysterious because the table was prepared for dinner.

The games room was mysterious because there was a bell ringing inside.

The bedroom windows were mysterious because they were all open.

The corridors were mysterious because they had spaces where paintings were missing.

The library was mysterious because three books fell off the shelves.

- 10 Axel said, "I don't really believe in coincidences...And there have been too many." **List** the coincidences they talk about in Chapter 13.

1. They were in the kitchen and said that some houses had dinner bells in the rooms, and then they heard a bell ringing in the games room.

2. They were in the library and Oto asked if they needed to see books flying off the shelves in order to believe in ghosts, and three books fell.

3. They were in the bedroom and Oto asked if they needed to see the ghost face to face, in order to believe in it, and the ghost appeared.

What was Axel's conclusion? He was nearly certain that someone was spying on them in the mansion.

11 **Link** the speaker to what they said.

Aristide      Axel      Ciro      Helena      Oto      Zinca

“But you’re saying it’s not a ghost. And we don’t know that!” \_\_\_\_\_  
Helena

“But a ghost should be the final solution...” \_\_\_\_\_ Axel

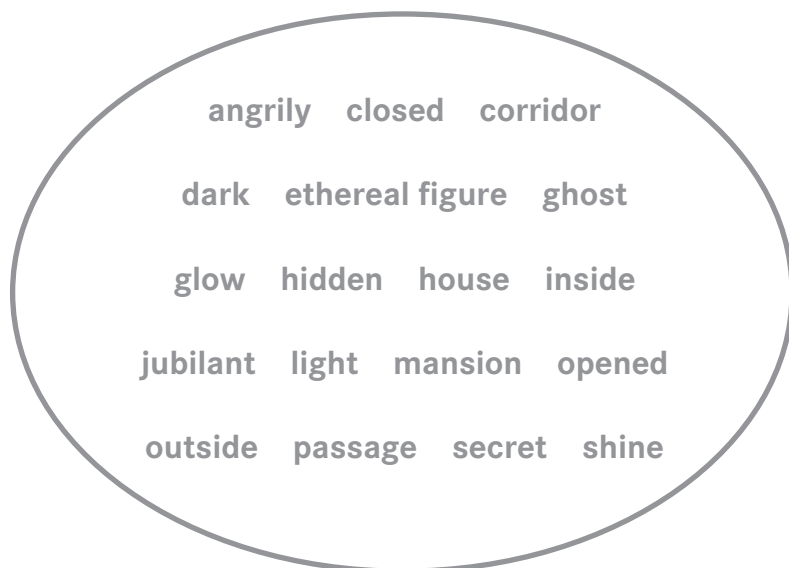
“That means that someone or something is listening to what we’re saying.” \_\_\_\_\_ Zinca

“If we’re detectives, we have to investigate, don’t we?” \_\_\_\_\_ Ciro

“Agreed.” \_\_\_\_\_ Aristide

“Tell me that what happened didn’t happen.” \_\_\_\_\_ Oto

12 **Identify** the words with similar meanings and opposite meanings.



Similar meanings: secret / hidden; passage / corridor; ghost / ethereal figure;  
glow / shine; house / mansion

Opposite meanings: opened / closed; inside / outside; angrily / jubilant;  
light / dark

# during reading

- 13 **Give** Zinca's reasons in Chapter 17 for saying that they had made important progress.

Nautilus believed that what made the baroness leave her house was not a ghost because that person wanted to frighten them away as well, so that they could look for Mrs Farrell's money and jewels in peace.

Nautilus believed that the inheritance was treasure because it came from pirate Sadie, and because the baroness mentioned gold bars.

They think she hid it well, because it was still hidden.

They think it was quite big and couldn't be hidden easily, so she didn't hide it in the mansion.

Nautilus believed that it was necessary to open the tower room because maybe the baroness had hidden her inheritance in that room, locked the door and forgotten about it.

- 14 When Nautilus stopped being frightened and started investigating, they had a lot of questions. **Match** the answers to their questions.

Why weren't they happy about opening the tower room?

Why was Ciro confused when he looked at the stairs to the tower room?

Why had somebody hidden the paintings?

Why did Ciro ask to borrow Axel's monocle?

When had somebody painted an X on the map in the bedroom?

They showed the real baroness with scars on her face.

They were disobeying the baroness's direct instructions.

He wanted to look closely at the picture of the young baroness standing next to Sadie's map.

The X had only been painted one or two weeks before.

He didn't know how the baroness could get there in her wheel chair.

**15** **Unjumble** the adjectives for the scene in the cemetery.

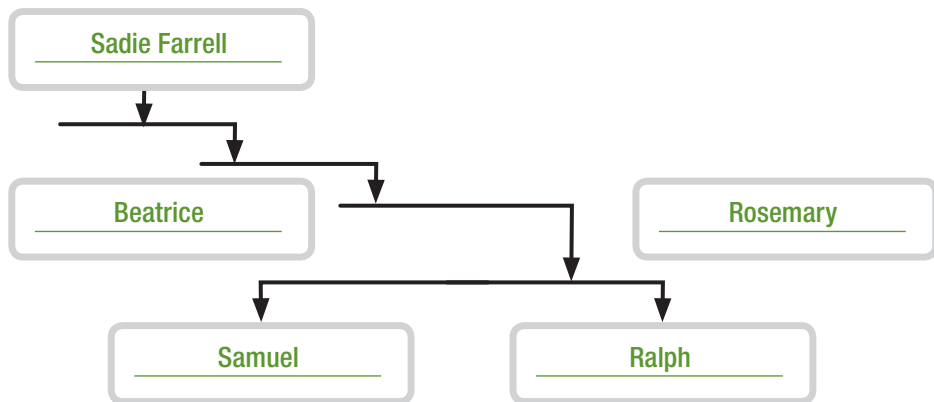
In the KRAD dark night, the DEETCIX excited detectives were digging in the TOFS soft earth of the cemetery. They were RUSE sure they were not going to find a ADDE dead body, but it still felt like a ZYRAC crazy thing to be doing. Helena's spade was the TRIFS first to hit something DRAH hard, and soon they uncovered a LODIS ENDOWO solid wooden coffin. When they opened it, it was LULF full of DOGL gold bars and CRIPESUO precious stones - pirate Sadie's AABCCEILLNU incalculable treasure!

**16** **Reorder** Nautilus' plan.

- 10** A strong man and an old lady walked into the mansion pulling a cart with sacks.
- 12** Aristide ran to find Oto, Zinca, Ciro, the professor and the lady in a wheelchair.
- 7** Helena and Axel talked loudly in the library.
- 9** Helena, Axel and Aristide hid in the hall.
- 4** Helena, Axel and Aristide said they were going to sit in the library.
- 2** Oto said he was going for a walk.
- 8** Oto saw a man run out of the hidden door.
- 1** They talked loudly in the kitchen about their plan.
- 11** When the man and his mother were six metres from the floor, Axel stopped the autosky.
- 6** Zinca, Ciro, the professor and the old lady went to the hut.
- 5** Zinca and Ciro met the professor and an old lady in a wheelchair who were waiting at the front entrance.
- 3** Zinca and Ciro said they were going to wait for the professor at the front entrance.

# after reading

- 1 **Draw** the Farrell family tree. (Sadie Farrell “worked” around 1869, so how many generations ago is that? and how many branches will that be in your tree?)



- 2 **Form sentences** to describe the links between Avante and Jules Verne.

Avante was started by Pierre Allotte,

is the submarine  
the three groups at school

in *Five Weeks in a Balloon*.

in *Twenty Thousand Leagues under the Sea*.

The names of

was the first book to include

using his father’s first name and his mother’s surname.

*Robur the Conqueror*

is the balloon

come from Jules Verne’s books.

*Victoria*

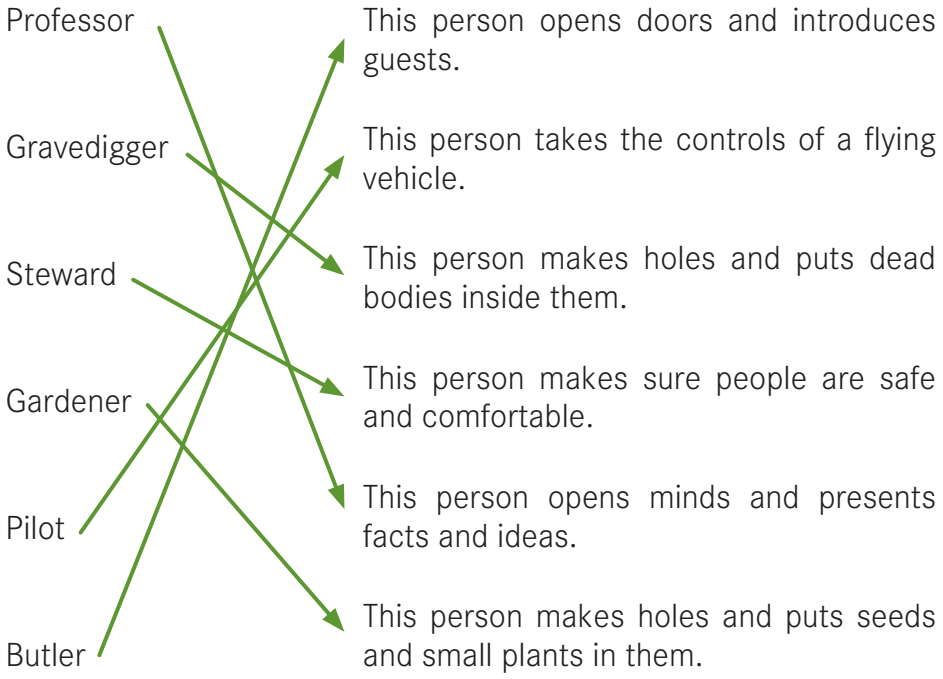
who is believed to be Jules Verne,

a dirigible called the *Albatross*.

*Nautilus*

1. Avante was started by Pierre Allotte, who is believed to be Jules Verne, using his father’s first name and his mother’s surname.
2. The names of the three groups at school come from Jules Verne’s books.
3. Robur the Conqueror was the first book to include a dirigible called the Albatross.
4. Victoria is the balloon in Five Weeks in a Balloon.
5. Nautilus is the submarine in Twenty Thousand Leagues under the Sea.

3 **Match** the jobs to the people we met in the story.



4 **Decide** which characteristics describe which type of stone.

White outside and glassy grey or brown inside.	Black and opaque.	An iron oxide mineral often found in beach sand.
A very hard type of stone usually found in riverbeds.	Used in jewellery.	Used to make fire, guns and houses.

Flint: White outside and glassy grey or brown inside; a very hard type of stone usually found in riverbeds; used to make fire, guns and houses.

Magnetite: Black and opaque; an iron oxide mineral often found in beach sand; used in jewellery.

5 Do you **remember** what Axel uses flint and magnetite for in the story?  
He uses flint to make fire and magnetite to open the secret passages and make the organ play.



# after reading

- 6 **Draw** a map of Farrell mansion and grounds (don't forget the X!)

A large, empty rectangular area defined by a dashed grey border, intended for drawing a map of the Farrell mansion and its grounds. The box is oriented vertically and occupies most of the page's width and height.